



# Pebblebed Heaths CONSERVATION TRUST



# Pebblebed Heaths CONSERVATION TRUST

## HIGHLIGHTS OF THIS WALK



### HISTORY

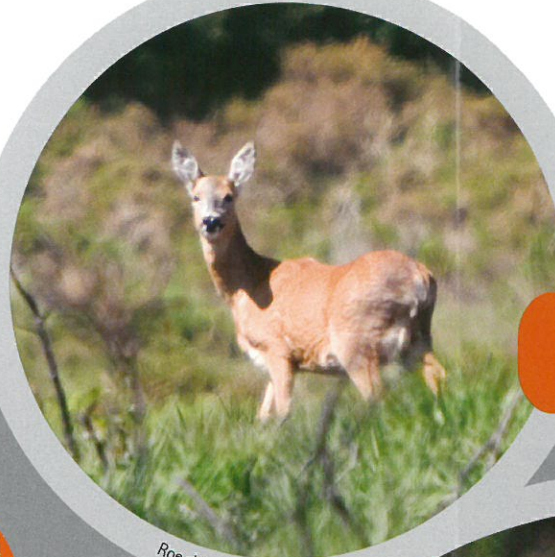
A World War Two tented camp was based in the area near the car park at Joney's Cross. The US marine troops used the temporary camp to practice for the D Day landings which took place at Omaha beach, France in 1944.



### ANIMAL LIFE

**Animals** The heathlands are a good place to see wild reptiles and mammals. Adders live in dry areas while grass snakes frequent the wetter places hunting frogs. Adders and common lizards bask on the banks in spring and summer. The area also supports a thriving population of roe deer.

**Ruby Red Devon cattle** The physical management of the heaths in recent years have resulted in dramatic improvements to the quality of the habitat with cattle grazing proving its value by successfully controlling tussocks of invasive purple moor grass. By grazing in the wet mires they also keep the land clear for dragonflies and damselflies.



Roe deer

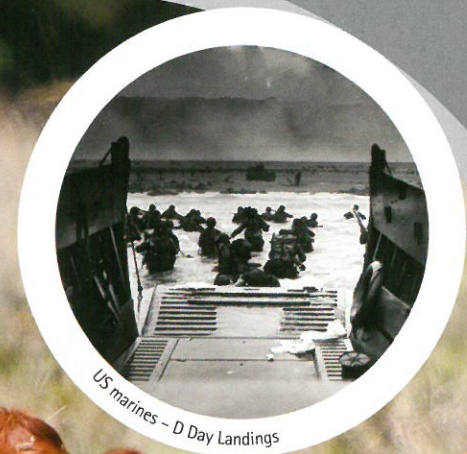
## Walk 2: Joney's Cross Circuit Walk



### THE EAST DEVON PEBBLEBED HEATHS CONSERVATION TRUST

The establishment of the East Devon Pebblebed Heaths Conservation Trust is a landmark in the history of the heaths and an important opportunity for their future. The Trust has been established to ensure that a sustainable plan is put in place to safeguard the future of the Pebblebed Heaths.

To date responsible management has resulted in dramatic heathland improvement with the return of many rare wildlife species. The heathland is located in an Area of Outstanding Natural Beauty (AONB) and has been recognised by both UK and European designations including a Site of Special Scientific Interest (SSSI), Special Protection Area (SPA) and a Special Area of Conservation (SAC).



US marines - D Day Landings



Ruby Red Devon



EAST DEVON PEBBLEBED HEATHS CONSERVATION TRUST

T) 01395 443881 E) mail@pebblebedheaths.org.uk  
www.pebblebedheaths.org.uk

Charity Reg No: 1109514 Company Reg No: 5413877 Vat No: 863 1887 92





## Walk 2

# Joney's Cross Circuit Walk

- 1) Cross over the road at the entrance to the car park, walk through the barrier and follow the track down. Cross over the junction and walk over the heathland until you reach the fence and stile.
- 2) Over the stile cross the bridge and wet area. Follow the track at the back of the common along the plantation boundary. As you walk along the track keep the commons to your left hand side.
- 3) Turn left and follow this track along the edge of the common and the fields. Please be careful as there are some very wet areas and steep ravines to cross over.
- 4) Once the track you are on reaches the road go through the barrier and turn left on to the road, then turn up the hill.
- 5) At the lay-by walk through the bank on your right hand side. Follow the commons to a major T junction.
- 6) At the T junction on the track turn left and walk uphill. (Between 1-6 there are a lot of tracks, if lost remember you must go up hill to point 1)
- 7) At the cross junction turn right and follow the track around the bowl shape of the commons and follow it round to the left and walk uphill.
- 8) Reach the junction and turn left and follow this track past the plantation on your right hand side and carry on up and back to the car park.

ROUTE: 4 km

TERRAIN: Moderate / some steep and wet boggy areas

PERMITTED:

